

## K-means Clustering in Knee Cartilage Classification: Data from the OAI

Joyce Sia Sin Yin<sup>1</sup>, Tan Tian Swee<sup>2</sup>, Matthias Tiong Foh Thye<sup>3</sup>, Leong Kah Meng<sup>4</sup>, Kelvin Ling Chia Hiik<sup>5</sup>, Sameen Ahmed Malik<sup>6</sup>, Jeremy Sia Yik Xian<sup>7</sup>

<sup>1,2,3,4,5,6,7</sup>Department of Biotechnology and Medical Engineering,  
School of Biomedical Engineering and Health Sciences, Universiti Teknologi Malaysia

---

### Article Info

#### Article history:

Received Sep 22, 2020

Revised May 29, 2020

Accepted Jun 29, 2020

---

#### Keywords:

Image processing

Cartilage segmentation

K-means clustering

Osteoarthritis

Bezier curve

---

### ABSTRACT

Knee osteoarthritis is a degenerative joint disease which affects people mostly from elderly population. Knee cartilage segmentation is still a driving force in managing early symptoms of knee pain and its consequences of physical disability. However, manual delineation of the tissue of interest by single trained operator is very time consuming. This project utilized a fully-automated segmentation that combined a series of image processing methods to process sagittal knee images. MRI scans undergo Bi-Bezier curve contrast enhancement which increase the distinctiveness of cartilage tissue. Bone-cartilage complex is extracted with dilation of mask resulted from region growing at distal femoral bone. Later, the processed image is clustered with  $k = 2$ , into two groups, including coarse cartilage group and background. The thin layer of cartilage is successfully clustered with satisfactory accuracy of  $0.987 \pm 0.004$ , sensitivity  $0.685 \pm 0.065$  of and specificity of  $0.994 \pm 0.004$ . The results obtained are promising and potentially replace the manual labelling process of training set in convolutional neural network model.

Copyright © 2019 Institute of Advanced Engineering and Science.  
All rights reserved.

---

### Corresponding Author:

Tan Tian Swee,

BioInspired Device and Tissue Engineering Research Group,

School of Biomedical Engineering and Health Sciences,

Universiti Teknologi Malaysia

Email: [tantswee@biomedical.utm.my](mailto:tantswee@biomedical.utm.my)

---

## 1. INTRODUCTION

Osteoarthritis (OA) is the main culprit of chronic disabilities in the United States, 26.9 million of adults are estimated to be affected [1]. The statistic is believed to surge to 59 million by 2020 [2]. Meanwhile, 16% of the elderly population was estimated to be affected by knee OA [3]. Knee pain problem is becoming more common among adults aged 40 years and above. According to the Control of Rheumatic Diseases (COPCORD) study carried out in Malaysia, there were 23% of patients who aged over 55 years showed significant clinical symptoms while 39% among those who were over 65 years old [4].

Knee OA is a degenerative joint disease of whole knee joint in which all its articular cartilage structures are damaged. In early detection of the disease, the pathologic events are dynamic that matrix synthesis and repair will be increased while osteophytes start forming to stabilize the injured joint. Clinically, patients may start a series of rehabilitation programs or simply stop the activities which induce joint pain. Late in disease, OA is said to be a total joint failure that most of the joint structures have undergone irreversible pathologic mutation. The transition of knee OA from a dynamic to an irreversible pathologic changes differs greatly from people, in many persons, may never experience the disease too [5].

Human knee articular cartilage is a composition of dense extracellular matrix, which is made of water, type II collagen, proteoglycans, with numerous glycoproteins and other non-collagenous proteins [6]. Referring to Figure 1, both femur and tibia have thin cartilage layers that allow two bones to glide against each other essentially without friction. Progressive loss of articular cartilage causes the friction between the two bones to increase which then generates inflammation and triggers pain through the nerve endings in the joint space. Felson and his team declared that there were systemic factors (genetics, dietary intake, oestrogen

used and bone density) and local biomechanical factors (muscle weakness, body mass index and joint laxity) contributing in increment of OA diseases [7].



Figure 1. Human knee anatomy. [24]

Although there are several pharmaceutical treatments for OA patients who are facing severe pain and functional or mobility disability, it was still insufficient. Therefore, non-pharmacological interventions for instance, knee cartilage magnetic resonance imaging (MRI) segmentation is still a motivational force in managing early symptoms of pain and the consequences of physical disability [9] [20]. Generally, knee joint segmentation methods can be grouped into manual segmentation, semi-automatic segmentation or interactive segmentation, and finally fully automatic segmentation model. In this paper, we proposed a fully automatic knee cartilage segmentation framework with K-means clustering in which the coarse result is then adapted to Chan-Vese model for active contour to obtain the cartilage segmentation.

### 1.1 Related Work

Knee joint segmentation is adopted to conduct quantitative assessment of OA marker, for instance, bone deformation, cartilage thickness and volume and osteophytes formation. Among the existing radiography, MRI sequence is more suitable for quantitative assessment of cartilage status compared to other conventional radiography methods. MR imaging provides sufficient signal-to-noise ratio (SNR) and contrast-to-noise ratio (CNR) with no significant artifacts such as geometric distortion and signal distortion [10]. Besides, high spatial resolution of MRI ensures sufficient pixels for cartilage thickness measurement such that articular cartilage is relatively thin, about 1.3 – 2.5mm thick in a healthy knee [11].

Substantial effort has been contributed by the researchers around the world working on knee cartilage MRI segmentation for decades. The segmentation methods are different in their level of automation and the level of priori knowledge needed for the user to classify the region of interest (ROI) [8]. The methods which require high level of user interaction need low level of priori knowledge on the knee structure and vice versa. A good example of interactive segmentation model was presented to segment knee cartilage by using locally statistical level set method (LSLSM) and compute its thickness using normal distance [12]. Meanwhile, a low-level priori knowledge needed segmentation framework is proposed to segment the knee cartilage through canny edge detection to extract the edge of cartilage for further region of interest (ROI) masking [13]. The model requiring moderate priori knowledge and user interaction is best illustrated by Folkesson, who proposed to implement unsupervised k-nearest neighbours framework to cluster tissue by selecting specific features such as voxel position, raw and Gaussian smoothed intensities and intensity derivatives [15]. Yin described a new approach named Layered Optimal Graph Image Segmentation of Multiple Objects and Surfaces (LOGISMOS) that introduced multi-surface interaction constraints to inhibit oversegmentation of cartilages and bones [16]. A high priori knowledge of knee structure is needed in allocating the segmentation barrier for a good segmentation result. As can be seen in Figure 2, random walker interactive segmentation model reported in [6] required user interaction to place seeds to label background and manually label the tibial, femoral and patellar cartilages as foreground. The model aims to reduce the error caused by inter- and intra- observer variability and hence ensuring the segmentation result reproducibility.

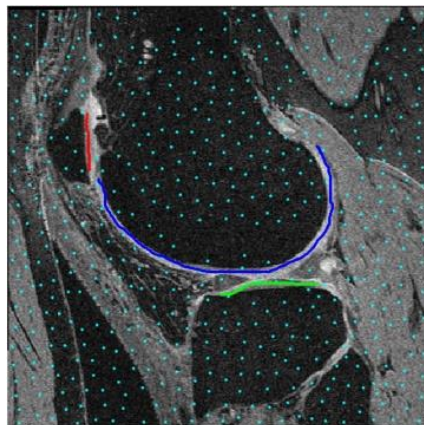


Figure 2. User interaction on labelling a knee MR image.

A fully automated cartilage segmentation using multiple atlases built and local structural analysis method was proposed by June-Goo to determine the seed points location for graph-cut based method. The results are promising but there are drawbacks in computation time, 30 minutes for atlas building procedure and 10 minutes for fusion labelling and region adjustment procedures, and incomplete segmentation when the femoral cartilage and tibial cartilage are too closely juxtaposed [17]. Intervention of deep learning in evaluating knee MR images is reported in [14]. A depth of 5 convolutional encoder-decoder network is trained with substantial amount of labelled image by an experienced radiologist. The results obtained are convincing with trade-off of laborious label work and long model training time. Active shape model (ASM) overcomes the limitation of region-based segmentation methods such as active contour and region growing. ASM includes the knowledge of the shape of the ROI and forms a deformable shape model to fit into an interested region, for instance, extracting distal femur and proximal tibia bone for joint space width assessment in [21]. ASM initialization was obtained by placing landmarks according to the shape of the objects. The landmarks will then move to new points in the normal direction from their original points. The model will change its shape based on the eigenvalues and repeat the process until convergence [8]. Fripp et al. proposed 3D ASM in knee bone segmentation. The author highlighted the necessity of larger training databases so as to improve the segmentation results [22].

## 1.2 Problem Definition

Manual delineation of the tissue in interest by a single trained operator is very time consuming [18]. The segmentation performed in clinical routine, is irreproducible and its reconstruction times up to several hours [19]. In recent years, researchers are looking forward for semi-automated segmentation and fully-automated segmentation methods to reduce the delineation time of knee cartilage. From the study, computer-aided segmentation provides more consistent segmentation on ROI with less bias or variability compared to manual delineation of cartilage structure [19].

We utilize a fully-automated segmentation that combined a series of image processing methods. Initially, the knee MR images were pre-processed with contrast and intensity enhancement before smoothing filter and unsharp masking were applied. K-means clustering method was used to cluster the tissues, divide cartilage from noisy background including fat tissue, synovial fluid, bones and ligaments. In this study, sagittal knee MR images were tested with the proposed segmentation framework. Comparisons between manual segmentation and the proposed method with comparison of random walker segmentation model were discussed in section 3.

## 2. RESEARCH METHOD

All the MRI data are obtained from the Osteoarthritis Initiative (OAI). The MRI will be pre-processed to improve their contrast, reduce the existing noise and sharpen the edges.

### 2.1 MR Image Acquisition and Software Used

The knee joint MR images are provided by The Osteoarthritis Initiative. The images were captured using water excitation double echo steady-state (DESS) imaging protocol with sagittal slices at 3.0T. Given that imaging parameters for the sequence is TR/TE: 16.32/4.71ms, size: 384x384. MATLAB 2019a was used to do the image enhancement and segmentation.

## 2.2. Proposed Framework

Figure 3 shows the proposed framework used in this study. The DICOM format knee slice is converted into 16-bit grayscale TIFF file format that remains full image details. The image is smoothed with median filter of window size of 3 x 3 to remove most existing noises. Later, we apply unsharp masking to enhance the acutance of the boundaries of bones and cartilages.

### 2.2.1 Bone-cartilage Mask Generation

As a common problem in medical images, the appearance of MR image is dark in nature and the contrast of cartilage is indistinctive among the neighbouring tissues. To overcome the problem, Bi-Bezier curve contrast enhancement (BBCCE) [23] is conducted to enhance the global brightness while preserving the mean brightness of the image. Conventional histogram equalization is not prioritized in medical image processing as its mapping curve, also named as cumulative frequency density curve, experiences a sudden jump which could pull the intensity distribution naively that distorts the image quality. Therefore, with gentle nature offered by BBCCE, the knee MR image can be enhanced by preserving pertinent knee features while retaining its nature image appearance. Then, a seed is placed in femoral bone region. Obtaining the binary mask for the femoral bone, we dilate the mask with disk size of 30 to crop the bone-cartilage interface (BCI).

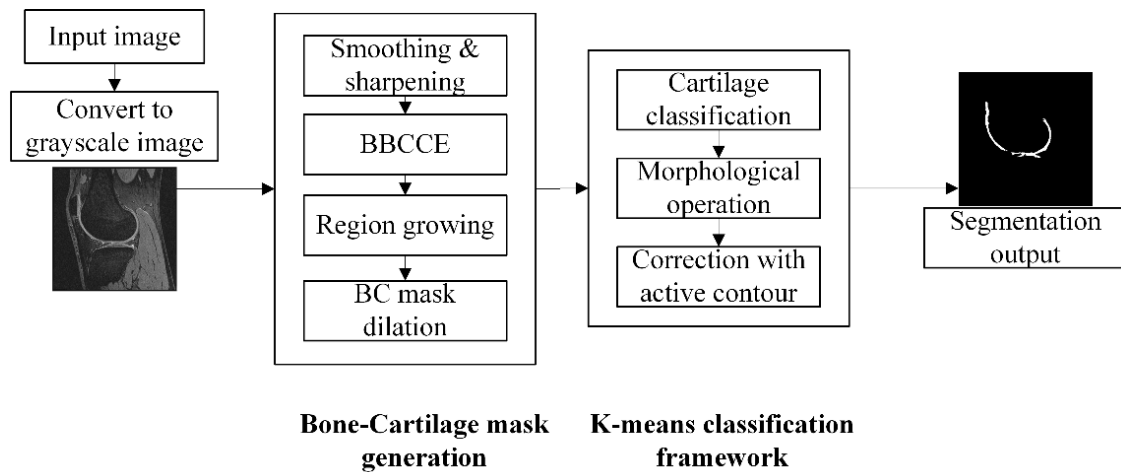


Figure 3. Flowchart of the proposed framework.

### 2.2.2 K-means classification framework

The bone-cartilage complex obtained from the previous stage is then input into the K-means classification framework. K-means clustering aims to partition the targeted observation into k cluster with the nearest mean. Given that a set of observations  $x_1, x_2, \dots, x_n$  where every observation is a d-dimensional real vector. This clustering method would divide the n observations into k sets, which is less than n.

Each centroid defines its cluster. At first, each data point is assigned to its nearest centroid with squared Euclidean distance. For instance, if  $o_i$  is the collection of centroids in set  $O$ , each observation  $x$  is assigned to their relative cluster based on:

$$\arg \min_{o_i} \text{dist}(o_i, x)^2, o_i \in O \quad (1)$$

Centroids, S will be recomputed by taking the mean of all observations assigned to the centroid's cluster:

$$o_i = \frac{1}{|S_i|} \sum_{x_i \in S_i} x_i \quad (2)$$

The clustering algorithm iterates until a stopping criterion is met, for instance, when there is no observation change clusters, the sum of the distances is minimized or the maximum number of iterations set initially is reached. In this study,  $k = 2$  is defined to separate cartilage as the foreground while the other tissues and bones as background.

Morphological opening operation is carried out so as to disconnect the cartilage with the unwanted parts. Then, Chan-Vese for active contour is applied to recover the losing details that caused by the opening process. Finally, the cartilages are extracted which can be seen in Figure 3. The segmentation result will be tested with Dice Similarity Coefficient and its classification performance test.

### 2.3 Evaluation Metrics

In this work, 40 sagittal knee MR images are tested with the proposed framework. Dice similarity coefficient (DSC) is used to verify the performance of our framework. As there is no ground truth provided by the database, manual segmentation of the images is normally done by an experienced operator. DSC refers to degree of agreement of both segmented results. Given that A is the segmentation result from the proposed framework while B is the manual segmented result by the operator:

$$Dice = \frac{2(A \cap B)}{A + B} \quad (3)$$

Sensitivity measures the performance of the proposed framework on classifying the cartilage pixels while specificity measures the ability of the framework to classify non-cartilage pixels. Accuracy measures the overall classification performance. Given that true positive (TP), false positive (FP), true negative (TN) and false negative (FN), sensitivity, specificity and accuracy can be defined as:

$$sensitivity = \frac{TP}{TP + FN} \quad (4)$$

$$specificity = \frac{TN}{TN + FP} \quad (5)$$

$$accuracy = \frac{TP + TN}{TP + TN + FP + FN} \quad (6)$$

### 3. RESULTS AND ANALYSIS

Referring to Figure 4b, a BBCCE enhanced knee MR image can be seen. The cartilages are highlighted and appear to be more distinctive from the neighbouring fat tissues which could increase the accuracy of classification at the following stage. Clustering the bone-cartilage complex with  $k = 2$ , coarse cartilage information is extracted from the background. The segmented result can be contaminated with the fat tissues or synovial fluid which has homogeneous intensity with the hyaline layers. Therefore, the coarse result undergoes opening process to remove the unwanted parts and recover the losted details with Chan-Vese active contour method with fixed of 200 iteration and the final segmentation can be seen in Figure 4c.

We compared our fully automated cartilage segmentation model with random walker interactive segmentation model [a] and the results from their performance evaluation are tabulated in Table 1 and Table 2. From 40 successful segmentations, the proposed method yields DSC of  $0.689 \pm 0.059$ , accuracy of  $0.987 \pm 0.004$ , sensitivity  $0.685 \pm 0.065$  of and specificity of  $0.994 \pm 0.004$ . Meanwhile, random walker interactive model gives DSC of  $0.694 \pm 0.062$ , accuracy of  $0.988 \pm 0.003$ , sensitivity  $0.678 \pm 0.092$  of and specificity of  $0.994 \pm 0.003$ . Notably that both frameworks acquire lower DSC value and sensitivity value indicating that both frameworks are sensitive to the intensity variation of the cartilages. As can be seen in Figure 5, hyaline cartilage will experience structure change with variant intensity distribution which can lead to wrong classification of cartilage pixels. In other words, the proposed model is sensitive and potential to detect cartilage lesion at early OA stage. Besides, both the segmentation models give high accuracy and specificity in cartilage classification.

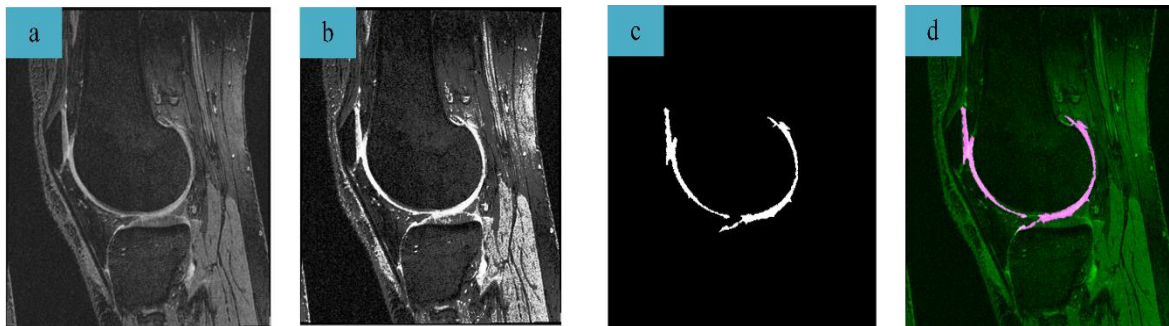


Figure 4. Cartilage classification by the proposed method. (a) Original input image. (b)BBCCE enhanced image. (c) Cartilage classification result. (d) Overlap result of original image and segmented result.

Table 1. Random walker interactive segmentation model evaluation metrics.

| Image       | DSC   | TP           | TN         | FP          | FN      | Accuracy | Sensitivity | Specificity |
|-------------|-------|--------------|------------|-------------|---------|----------|-------------|-------------|
| 1           | 0.668 | 2199         | 143074     | 487         | 1696    | 0.985    | 0.565       | 0.997       |
| 2           | 0.690 | 2338         | 143014     | 1329        | 775     | 0.986    | 0.751       | 0.991       |
| 3           | 0.708 | 1765         | 144236     | 174         | 1281    | 0.990    | 0.579       | 0.999       |
| 4           | 0.691 | 1427         | 144755     | 307         | 967     | 0.991    | 0.596       | 0.998       |
| 5           | 0.762 | 2190         | 143895     | 545         | 826     | 0.991    | 0.726       | 0.996       |
| 6           | 0.710 | 2416         | 143066     | 204         | 1770    | 0.987    | 0.577       | 0.999       |
| 7           | 0.704 | 1761         | 144211     | 563         | 921     | 0.990    | 0.657       | 0.996       |
| 8           | 0.679 | 1558         | 144426     | 727         | 745     | 0.990    | 0.677       | 0.995       |
| 9           | 0.824 | 2443         | 143969     | 507         | 537     | 0.993    | 0.820       | 0.996       |
| 10          | 0.680 | 1957         | 143653     | 740         | 1106    | 0.987    | 0.639       | 0.995       |
| 11          | 0.731 | 2845         | 142517     | 798         | 1296    | 0.986    | 0.687       | 0.994       |
| 12          | 0.729 | 1763         | 144385     | 352         | 956     | 0.991    | 0.648       | 0.998       |
| 13          | 0.764 | 2401         | 143569     | 885         | 601     | 0.990    | 0.800       | 0.994       |
| 14          | 0.636 | 1637         | 143946     | 328         | 1545    | 0.987    | 0.514       | 0.998       |
| 15          | 0.567 | 1871         | 142733     | 814         | 2038    | 0.981    | 0.479       | 0.994       |
| 16          | 0.664 | 2343         | 142740     | 685         | 1688    | 0.984    | 0.581       | 0.995       |
| 17          | 0.680 | 2545         | 142511     | 1658        | 742     | 0.984    | 0.774       | 0.988       |
| 18          | 0.603 | 1221         | 144624     | 1083        | 528     | 0.989    | 0.698       | 0.993       |
| 19          | 0.682 | 2218         | 143170     | 1402        | 666     | 0.986    | 0.769       | 0.990       |
| 20          | 0.677 | 1851         | 143838     | 570         | 1197    | 0.988    | 0.607       | 0.996       |
| 21          | 0.668 | 2082         | 143307     | 1090        | 977     | 0.986    | 0.681       | 0.992       |
| 22          | 0.667 | 2283         | 142896     | 880         | 1397    | 0.985    | 0.620       | 0.994       |
| 23          | 0.638 | 2208         | 142739     | 609         | 1900    | 0.983    | 0.537       | 0.996       |
| 24          | 0.755 | 1619         | 144788     | 617         | 432     | 0.993    | 0.789       | 0.996       |
| 25          | 0.617 | 1503         | 144086     | 868         | 999     | 0.987    | 0.601       | 0.994       |
| 26          | 0.555 | 1755         | 142882     | 1944        | 875     | 0.981    | 0.667       | 0.987       |
| 27          | 0.609 | 2093         | 142681     | 1961        | 721     | 0.982    | 0.744       | 0.986       |
| 28          | 0.695 | 1398         | 144832     | 893         | 333     | 0.992    | 0.808       | 0.994       |
| 29          | 0.767 | 3048         | 142554     | 1007        | 847     | 0.987    | 0.783       | 0.993       |
| 30          | 0.693 | 1721         | 144213     | 248         | 1274    | 0.990    | 0.575       | 0.998       |
| 31          | 0.779 | 2073         | 144205     | 522         | 656     | 0.992    | 0.760       | 0.996       |
| 32          | 0.734 | 1918         | 144147     | 490         | 901     | 0.991    | 0.680       | 0.997       |
| 33          | 0.756 | 1879         | 144363     | 544         | 670     | 0.992    | 0.737       | 0.996       |
| 34          | 0.662 | 1937         | 143537     | 956         | 1026    | 0.987    | 0.654       | 0.993       |
| 35          | 0.644 | 1307         | 144707     | 594         | 848     | 0.990    | 0.606       | 0.996       |
| 36          | 0.776 | 1985         | 144323     | 471         | 677     | 0.992    | 0.746       | 0.997       |
| 37          | 0.623 | 2326         | 142314     | 2138        | 678     | 0.981    | 0.774       | 0.985       |
| 38          | 0.691 | 2234         | 143220     | 732         | 1270    | 0.986    | 0.638       | 0.995       |
| 39          | 0.771 | 2451         | 143550     | 722         | 733     | 0.990    | 0.770       | 0.995       |
| 40          | 0.797 | 2962         | 142986     | 870         | 638     | 0.990    | 0.823       | 0.994       |
| <b>Mean</b> | 0.694 | 2038.27<br>5 | 143616.550 | 807.85<br>0 | 993.325 | 0.988    | 0.678       | 0.994       |
| <b>STD</b>  | 0.062 | 430.851      | 755.949    | 471.08<br>4 | 415.757 | 0.003    | 0.092       | 0.003       |

Table 2. Proposed framework evaluation metrics.

| Image       | DSC   | TP       | TN         | FP      | FN      | Accuracy | Sensitivity | Specificity |
|-------------|-------|----------|------------|---------|---------|----------|-------------|-------------|
| 1           | 0.552 | 2555     | 140760     | 2801    | 1340    | 0.972    | 0.656       | 0.980       |
| 2           | 0.682 | 2521     | 142581     | 1762    | 592     | 0.984    | 0.810       | 0.988       |
| 3           | 0.683 | 1796     | 143989     | 421     | 1250    | 0.989    | 0.590       | 0.997       |
| 4           | 0.684 | 1508     | 144557     | 505     | 886     | 0.991    | 0.630       | 0.997       |
| 5           | 0.721 | 2074     | 143774     | 666     | 942     | 0.989    | 0.688       | 0.995       |
| 6           | 0.713 | 2574     | 142809     | 461     | 1612    | 0.986    | 0.615       | 0.997       |
| 7           | 0.710 | 1811     | 144166     | 608     | 871     | 0.990    | 0.675       | 0.996       |
| 8           | 0.659 | 1637     | 144128     | 1025    | 666     | 0.989    | 0.711       | 0.993       |
| 9           | 0.721 | 2289     | 143396     | 1080    | 691     | 0.988    | 0.768       | 0.993       |
| 10          | 0.708 | 2012     | 143786     | 607     | 1051    | 0.989    | 0.657       | 0.996       |
| 11          | 0.684 | 2711     | 142245     | 1070    | 1430    | 0.983    | 0.655       | 0.993       |
| 12          | 0.653 | 1790     | 143761     | 976     | 929     | 0.987    | 0.658       | 0.993       |
| 13          | 0.766 | 2352     | 143669     | 785     | 650     | 0.990    | 0.783       | 0.995       |
| 14          | 0.635 | 2105     | 142936     | 1338    | 1077    | 0.984    | 0.662       | 0.991       |
| 15          | 0.620 | 2106     | 142766     | 781     | 1803    | 0.982    | 0.539       | 0.995       |
| 16          | 0.692 | 2613     | 142518     | 907     | 1418    | 0.984    | 0.648       | 0.994       |
| 17          | 0.734 | 2416     | 143292     | 877     | 871     | 0.988    | 0.735       | 0.994       |
| 18          | 0.635 | 1328     | 144601     | 1106    | 421     | 0.990    | 0.759       | 0.992       |
| 19          | 0.692 | 2124     | 143440     | 1132    | 760     | 0.987    | 0.736       | 0.992       |
| 20          | 0.684 | 1943     | 143718     | 690     | 1105    | 0.988    | 0.637       | 0.995       |
| 21          | 0.689 | 2001     | 143648     | 749     | 1058    | 0.988    | 0.654       | 0.995       |
| 22          | 0.698 | 2144     | 143461     | 315     | 1536    | 0.987    | 0.583       | 0.998       |
| 23          | 0.638 | 2398     | 142336     | 1012    | 1710    | 0.982    | 0.584       | 0.993       |
| 24          | 0.724 | 1536     | 144750     | 655     | 515     | 0.992    | 0.749       | 0.995       |
| 25          | 0.626 | 1581     | 143985     | 969     | 921     | 0.987    | 0.632       | 0.993       |
| 26          | 0.534 | 1766     | 142606     | 2220    | 864     | 0.979    | 0.671       | 0.985       |
| 27          | 0.599 | 1875     | 143070     | 1572    | 939     | 0.983    | 0.666       | 0.989       |
| 28          | 0.729 | 1220     | 145330     | 395     | 511     | 0.994    | 0.705       | 0.997       |
| 29          | 0.752 | 2854     | 142715     | 846     | 1041    | 0.987    | 0.733       | 0.994       |
| 30          | 0.749 | 2016     | 144091     | 370     | 979     | 0.991    | 0.673       | 0.997       |
| 31          | 0.777 | 2076     | 144190     | 537     | 653     | 0.992    | 0.761       | 0.996       |
| 32          | 0.707 | 1788     | 144185     | 452     | 1031    | 0.990    | 0.634       | 0.997       |
| 33          | 0.736 | 1929     | 144142     | 765     | 620     | 0.991    | 0.757       | 0.995       |
| 34          | 0.745 | 2065     | 143980     | 513     | 898     | 0.990    | 0.697       | 0.996       |
| 35          | 0.653 | 1434     | 144499     | 802     | 721     | 0.990    | 0.665       | 0.994       |
| 36          | 0.725 | 1851     | 144199     | 595     | 811     | 0.990    | 0.695       | 0.996       |
| 37          | 0.605 | 2195     | 142394     | 2058    | 809     | 0.981    | 0.731       | 0.986       |
| 38          | 0.685 | 2172     | 143282     | 670     | 1332    | 0.986    | 0.620       | 0.995       |
| 39          | 0.792 | 2466     | 143694     | 578     | 718     | 0.991    | 0.774       | 0.996       |
| 40          | 0.784 | 2896     | 142963     | 893     | 704     | 0.989    | 0.804       | 0.994       |
| <b>Mean</b> | 0.689 | 2063.200 | 143510.300 | 914.100 | 968.400 | 0.987    | 0.685       | 0.994       |
| <b>STD</b>  | 0.059 | 407.393  | 864.287    | 527.979 | 339.059 | 0.004    | 0.065       | 0.004       |

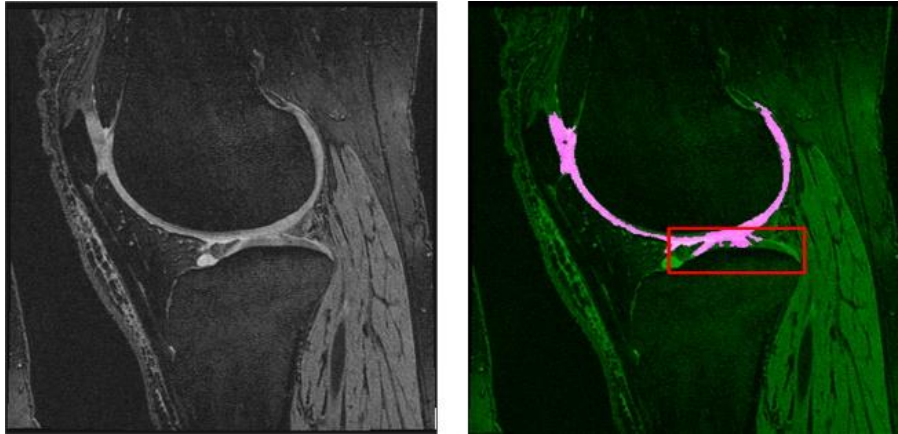


Figure 5. Detection of hyaline extracellular matrix starts tearing down.

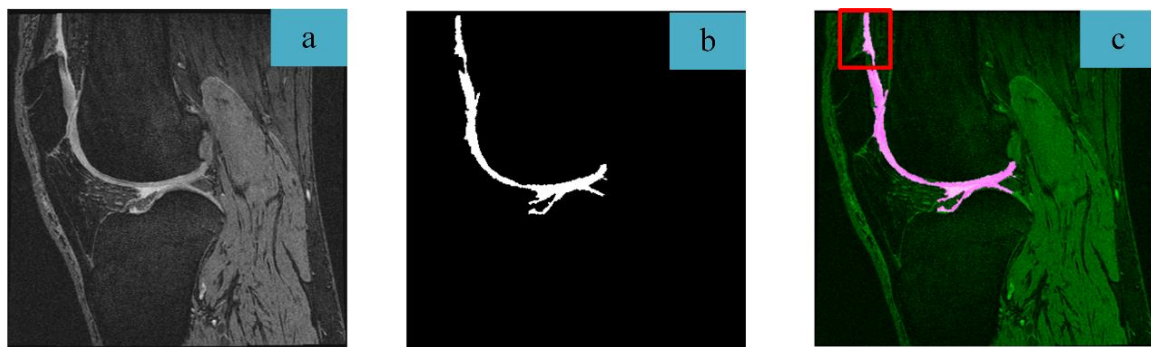


Figure 6. Misclassification of neighbouring tissues with similar intensity.

As a trade-off of labelling work, the proposed framework classifies the bright cartilage from neighbouring dark tissues through intensity classification of  $k = 2$ . In Figure 6, misclassification of neighbouring tissue as patellar cartilage can be seen such that the intensity of the misclassified pixels is homogeneous with the cartilage pixels. To overcome this, morphological operations in breaking the connection and removal of unwanted region are suggested. Apart from that, a distance parameter can be added into the framework to compute the distance of the targeted pixels from the centroid. We can easily filter out the misclassified parts once it reaches the preset maximum distance.

In a nutshell, the proposed method that classifies the cartilages automatically is competitive with semi-automatic random walker segmentation model. The proposed model can be used to replace the tedious and time-consuming cartilage labelling work for deep learning model and active shape model which require large training database to ensure good classification results.

#### 4. CONCLUSION

In short, 40 knee joint MR images from sagittal view are successfully segmented through the proposed framework to extract the cartilage information. We introduced a novel framework of combining gentle BBCCE contrast enhancement, bone-cartilage complex extraction with region growing and dilation of binary mask and finally classification of cartilage with K-means clustering and active contour implementation to recover the lost information. The proposed fully automated model is competitive with other semi-automated model and shows great potential in assisting the physicians in OA diagnosis and labelling cartilage for substantial amount of training set for deep learning classification model.

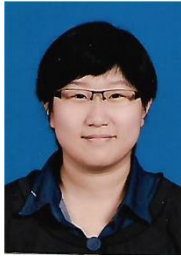
#### ACKNOWLEDGMENTS

The authors would like to express their gratitude to Universiti Teknologi Malaysia and the Ministry of Higher Education (MOHE) Malaysia for supporting this research under Research University Grant (RUG), number Q.J130000.3051.01M61. In addition, the authors would also like to thank the Research Management Center (RMC) – UTM for supporting this research project.



## REFERENCES

- [1] Lawrence, Reva C., David T. Felson, Charles G. Helmick, Lesley M. Arnold, Hyon Choi, Richard A. Deyo, Sherine Gabriel et al., "Estimates of the prevalence of arthritis and other rheumatic conditions in the United States: Part II," *Arthritis & Rheumatism*, vol. 58, no. 1, pp. 26-35, 2008.
- [2] Helmick, Charles G., David T. Felson, Reva C. Lawrence, Sherine Gabriel, Rosemarie Hirsch, C. Kent Kwok, Matthew H. Liang et al. "Estimates of the prevalence of arthritis and other rheumatic conditions in the United States: Part I." *Arthritis & Rheumatism*, vol. 58, no. 1, pp. 15-25, 2008.
- [3] Ministry of Health Malaysia, "Clinical Practice Guidelines," *Management of Osteoarthritis*, 2nd ed. Malaysia Health Technology Assessment Section, pp.1-2, 2013.
- [4] Veerapen, Kiran, Richard D. Wigley, and Hans Valkenburg, "Musculoskeletal pain in Malaysia: a COPCORD survey," *The Journal of rheumatology*, vol. 34, no. 1, pp. 207-213, 2007.
- [5] Felson, David T. "An update on the pathogenesis and epidemiology of osteoarthritis," *Radiologic Clinics*, vol. 42, no. 1, pp. 1-9, 2004.
- [6] Gan, Hong-Seng, Tian-Swee Tan, Liang-Xuan Wong, Weng-Kit Tham, Khairil Amir Sayuti, Ahmad Helmy Abdul Karim, and Mohammed Rafiq bin Abdul Kadir, "Interactive knee cartilage extraction using efficient segmentation software: Data from the osteoarthritis initiative," *Bio-medical materials and engineering* 24, no. 6: 3145-3157, 2014.
- [7] Felson, David T., Reva C. Lawrence, Paul A. Dieppe, Rosemarie Hirsch, Charles G. Helmick, Joanne M. Jordan, Raynard S. Kington et al., "Osteoarthritis: new insights. Part 1: the disease and its risk factors," *Annals of internal medicine*, vol. 133, no. 8, pp. 635-646, 2000.
- [8] Arovitola, Andrea, and Luigi Gallo, "Knee bone segmentation from MRI: A classification and literature review," *Biocybernetics and Biomedical Engineering* 36, no. 2, pp. 437-449, 2016.
- [9] Foo, Chai Nien, Arumugam Manohar, Lekhray Rampal, Munn-Sann Lye, Sherina Mohd-Sidik, and Zubaidah Jamil Osman, "Knee Pain and Functional Disability of Knee Osteoarthritis Patients Seen at Malaysian Government Hospitals," *Malaysian Journal of Medicine and Health Sciences*, vol. 13, no. 2, pp. 7-15, 2017.
- [10] Sumanaweera, Thilaka, Gary Glover, Samuel Song, John Adler, and Sandy Napel, "Quantifying MRI geometric distortion in tissue," *Magnetic resonance in medicine*, vol. 31, no. 1, pp. 40-47, 1994.
- [11] Eckstein, Felix, Maximilian Reiser, Karl-Hans Englmeier, and Reinhard Putz, "In vivo morphometry and functional analysis of human articular cartilage with quantitative magnetic resonance imaging—from image to data, from data to theory," *Anatomy and embryology*, vol. 203, no. 3, pp. 147-173, 2001.
- [12] Faisal, Amir, Siew-Cheok Ng, Siew-Li Goh, and Khin Wee Lai, "Knee cartilage segmentation and thickness computation from ultrasound images," *Medical & biological engineering & computing*, vol. 56, no. 4, pp. 657-669, 2018.
- [13] Swamy, MS Mallikarjuna, and M. S. Holi, "Knee joint cartilage visualization and quantification in normal and osteoarthritis," *IEEE International Conference on Systems in Medicine and Biology*, pp. 138-142, 2010.
- [14] Liu, Fang, Zhaoye Zhou, Alexey Samsonov, Donna Blankenbaker, Will Larison, Andrew Kanarek, Kevin Lian, Shivkumar Kambhampati, and Richard Kijowski, "Deep learning approach for evaluating knee MR images: achieving high diagnostic performance for cartilage lesion detection," *Radiology* 289, no. 1, pp. 160-169, 2018.
- [15] Folkesson, Jenny, Erik B. Dam, Ole F. Olsen, Paola C. Pettersen, and Claus Christiansen, "Segmenting articular cartilage automatically using a voxel classification approach," *IEEE transactions on medical imaging*, vol. 26, no. 1, pp. 106-115, 2006.
- [16] Yin, Yin, Xiangmin Zhang, Rachel Williams, Xiaodong Wu, Donald D. Anderson, and Milan Sonka, "LOGISMOS—layered optimal graph image segmentation of multiple objects and surfaces: cartilage segmentation in the knee joint," *IEEE transactions on medical imaging*, vol. 29, no. 12, pp. 2023-2037, 2010.
- [17] Lee, June-Goo, Serter Gumus, Chan Hong Moon, C. Kent Kwok, and Kyongtae Ty Bae, "Fully automated segmentation of cartilage from the MR images of knee using a multi-atlas and local structural analysis method," *Medical physics*, vol. 41, no. 9, pp. 092303, 2014.
- [18] Yu, H. J., A. Chang, Y. Fukuda, Y. Terada, T. Nozaki, and H. Yoshioka, "Comparison of semi-automated and manual segmentation of knee cartilage," *Osteoarthritis and Cartilage*, vol. 24, pp. S311, 2016.
- [19] Seim, Heiko, Dagmar Kainmueller, Hans Lamecker, Matthias Bindernagel, Jana Malinowski, and Stefan Zachow, "Model-based auto-segmentation of knee bones and cartilage in MRI data," *Proc. Medical Image Analysis for the Clinic: A Grand Challenge, in conjunction with MICCAI 2010*, pp. 215-223, 2010.
- [20] Rodrigues, Marcelo Bordalo, and Gilberto Luís Camanho, "Mri evaluation of knee cartilage," *Revista Brasileira de Ortopedia (English Edition)*, vol. 45, no. 4, pp. 340-346, 2010.
- [21] Wu, Jing, and Mohamed R. Mahfouz, "Robust x-ray image segmentation by spectral clustering and active shape model," *Journal of Medical Imaging* 3, no. 3 pp. 034005, 2016.
- [22] Fripp, Jurgen, Pierrick Bourgeat, Andrea JU Mewes, Simon K. Warfield, Stuart Crozier, and Sébastien Ourselin, "3D statistical shape models to embed spatial relationship information," In *International Workshop on Computer Vision for Biomedical Image Applications*, pp. 51-60, Springer, Berlin, Heidelberg, 2005.
- [23] Gan, Hong-Seng, Tan Tian Swee, Ahmad Helmy Abdul Karim, Khairil Amir Sayuti, Mohammed Rafiq Abdul Kadir, Weng-Kit Tham, Liang-Xuan Wong, Kashif T. Chaudhary, Jalil Ali, and Preecha P. Yupapin, "Medical image visual appearance improvement using bihistogram bezier curve contrast enhancement: data from the osteoarthritis initiative," *The Scientific World Journal* 2014, 2014.
- [24] Kathleen Davis. The Human Knee. Retrieved from: <https://www.medicalnewstoday.com/articles/299204#knee-anatomy>.

**BIOGRAPHY OF AUTHORS**

Joyce Sia Sin Yin was born in Sibul, Sarawak. She received her B. Eng (Electrical-Electronics) degree from Universiti Teknologi Malaysia (UTM), Johor, Malaysia, in 2018 and is currently pursuing the Ph.D degree in biomedical engineering at Universiti Teknologi Malaysia. Her research interest covers signal and image processing with artificial intelligence implementation, control system and wireless power transfer.



Tan Tian Swee received both his M.Sc. degree and Doctorate degree back in the year 2004 and 2008 respectively from the Universiti Teknologi Malaysia. His research area encompasses the area of Digital Signal Processing and has published numerous high impact factor journals, thus establishing his expertise in the domain. He has spearheaded numerous projects and have acquired prestigious grants from various sources and one of his current notable milestone is the collaboration between UTM and IJN. He is currently a Senior Lecturer at the Faculty of Biomedical Engineering, UTM and also serves as a Program Co-ordinator in the Faculty of Biomedical Engineering. His additional portfolio includes being a member of the Medical Device and Technology Group (MediTEG) and Frontier Materials research alliances.



Matthias Tiong Foh Thye was born in Kuching, Sarawak, Malaysia in 1994. He received the B. Eng (Electrical - Engineering) degree from Universiti Teknologi Malaysia (UTM), Skudai, Malaysia in 2018 and is currently pursuing the Ph.D degree in biomedical engineering at Universiti Teknologi Malaysia (UTM), Skudai, Malaysia. He is conducting the research on the wireless power transfer for biomedical application. His research interests are in human tissue dielectric properties, electromagnetic safety and image processing.



Leong Kah Meng received his degree of Bachelor of Engineering (Electrical-Electronics) and Master of Engineering (Biomedical) with honours from School of Electrical Engineering and School of Biomedical Engineering and Health Sciences, Faculty of Engineering, Universiti Teknologi Malaysia, Malaysia in 2013 and 2017 respectively. Currently, he is pursuing his Ph.D in Biomedical Engineering in School of Biomedical Engineering and Health Sciences, Faculty of Engineering, Universiti Teknologi Malaysia, Malaysia. His research interests include wireless power transfer, signal processing, power electronics, control system and image processing.



Jeremy Sia Yik Xian was born in Sibul, Sarawak, Malaysia in 1999. He is an undergraduate student of Bachelor of Engineering (Electrical-Mechatronics) in Universiti Teknologi Malaysia (UTM), Skudai, Malaysia. His interests include machine learning in biomedical image processing, surgical robots, and biomechanics.



Kelvin Ling Chia Hiik received the degree of Bachelor of Engineering (Electrical-Electronics) and Master of Engineering (Electrical Power) with honours from School of Electrical Engineering, Faculty of Engineering, Universiti Teknologi Malaysia, Malaysia in 2016 and 2018 respectively. Currently, he is pursuing his Ph.D in Biomedical Engineering in School of Biomedical Engineering and Health Sciences, Faculty of Engineering, Universiti Teknologi Malaysia, Malaysia. His research interests include signal processing, power electronics, control system and image processing.



Sameen Ahmed Malik is currently pursuing his Ph.D degree in Biomedical Engineering Universiti Teknologi Malaysia. His research interest covers early screening of asthma, disinfection of Escherichia coli with UVA-LED and image processing.