

Efficient Hybrid Genetic Based Multi Dimensional Host Load Aware Algorithm for Scheduling and Optimization of Virtual Machines

T. Thiruvenkadam¹, V. Karthikeyani²

¹Department of Computer Science, K.S. Rangasamy College of Arts and Science, Tiruchengode, Tamilnadu, India.

²Department of Computer Science, Thiruvalluvar Govt., Arts College, Rasipuram, Tamilnadu, India.

E-mail: mailone.thiru@gmail.com, drvkarthikeyani@gmail.com

Abstract

Mapping the virtual machines to the physical machines cluster is called the VM placement. Placing the VM in the appropriate host is necessary for ensuring the effective resource utilization and minimizing the datacenter cost as well as power. Here we present an efficient hybrid genetic based host load aware algorithm for scheduling and optimization of virtual machines in a cluster of Physical hosts. We developed the algorithm based on two different methods, first initial VM packing is done by checking the load of the physical host and the user constraints of the VMs. Second optimization of placed VMs is done by using a hybrid genetic algorithm based on fitness function. Our simulation results show that the proposed algorithm outperforms existing methods and enhances the rate of resource utilization through accommodating more number of virtual machines in a physical host

Keywords: Virtual Machine, Physical Machine Cluster, VM Scheduling, Load Rebalancing, Load Monitoring

1. Introduction

Infrastructure-as-a-Service (IaaS) is the most fundamental use of cloud computing. The virtualization technology is the base to form an IaaS platform. This proposes the entire computing resources for deploying and executing applications, storing data, or accommodating a company's complete computing environment [3]. Virtualization technologies guarantee opportunities for cloud data centers to host applications on shared infrastructure. Data center expenses can be lessened by using virtual machines (VMs) Cloud data center providers can create a huge number of virtual machines (VMs) for different types of workload and specification requirements [4]. Each VM is configured with a certain amount of computing resources which is adequate with workload requirements. The cloud service providers can consolidate all the VMs into a few numbers of physical hosts, keeping in mind the end goal to lessen the aggregate number of obliged physical servers and abusing server capacities all the more completely, permitting cloud providers to spare cash on equipment and vitality costs. VM consolidation method is the key sympathy toward attaining economy of scale in a cloud data center domain [5].

The advent of virtualization technology enables the physical server consolidation in datacenters which plays a vital role in minimizing the number of physical servers used and energy consumption also. Various approaches has been provided by the researchers for server consolidation in data centers but none of them have been considered all the aspects of the server consolidation which ensures the QOS as well as reduced cost for the datacenter administrators. Therefore a new algorithm is needed in order to provide better service to the cloud users and at the same time reducing the operational cost to the service provider. Placing the VM in the appropriate host is necessary for ensuring the effective resource utilization and minimizing the datacenter cost as well as power. To address this problem in this paper we propose a new efficient hybrid genetic based host load aware algorithm for scheduling and optimization of virtual machines in a cluster of Physical hosts. We divide this problem into two following categories.

1.1 Initial Scheduling of VMs

The Virtual Machine allocation problem in a cloud infrastructure is investigated by many researchers in the past. But the majority of the presented mechanisms paid no attention to the ever changing load of the physical host and dynamic nature of the Virtual Machine deployment requests that frequently reaches the cloud provider infrastructure. Here we present an efficient hybrid host load aware algorithm for scheduling virtual machines to a cluster of Physical hosts. We developed the algorithm based on two different methods, first by checking the load of the physical host, the load factor of a physical host can be measured by the way of analyzing utilization level of the individual resources like CPU, Memory and Network bandwidth. Second by considering the past utilization activities of a VM to a physical host.

1.2 Ongoing Load Rebalancing or Optimization

Rebalancing of load in datacenter environment need live VM migrations but more number of frequently moved VMs between physical hosts causes increased network bandwidth utilization and datacenter cost hence the load rebalancing has to be achieved with minimum number of VM migrations in order to solve this issue we used a modified version of hybrid genetic algorithm for load optimization. The main contribution of this paper includes the introduction of virtualization technology, a new proposed algorithm for initial VM scheduling, ongoing load rebalancing or optimization and validation of the proposed algorithm on a simulated environment for its goals.

The rest of the paper is organized as follows: In Section II we describe the related work while in Section III placement problem under study has been explained, we present the design model to explain the proposed strategy in section IV The proposed algorithm for VM scheduling is discussed in section V. Load balancing and VM optimization based on genetic algorithm is presented in section VI. Section VII shows the experimental setup and results acquired by our technique compared with some of the existing strategy for optimal VM placement and optimization. Section VI concludes the paper and spotlights some possible future directions.

2. Related work

Most of the IaaS cloud data centers uses virtualization technology since it provides a good flexibility in the provisioning and placement of servers and their associated workloads and cost savings [6] [7] while this model provides a number of advantages, it is essential to administer the allocation of virtual machines to the physical hosts in the data center. Even though a lot of researchers have been studied this virtual machine mapping problem in the past we draw attention to some of the closest work in perspective of our point.

In [8] the number of physical machines needed to deploy the requested virtual machine instances are reduced by combining time series forecasting techniques and bin packing heuristic but the model has not included the relationships between multiple resources, like CPU and I/O. In [9] the VM placement algorithms make use of the behavior of VMs to have some properties in general. In [10] for the placement of virtual machines to physical machines a two level control management system is used and it uses combinatorial and multi-phase efficiency to solve potentially inconsistent scheduling constraints. In [11], VM scheduling constraints are considered as single dimension in a multidimensional Knapsack problem.

In [12], the VM scheduling policy is primarily dealt out from the viewpoint of network traffic and three common scheduling algorithms have been introduced for Cloud computing and simulation results provided. In [13] the performing load balancing in data centers are intensively studied the heuristics has been used as a common approach among systems to enables the load balancing among physical servers. In [14] the performance variations have been identified and monitored in a physical server hosting VMs. A few simple VM placement algorithms like time-shared and space-shared were presented and compared in [15] and introduced a method to model and simulate Cloud computing environments, in which the algorithms can be implemented. In [16] pioneered methods for virtual machine migration and proposed some migration techniques and algorithms. [17] Evaluated most important load-balance scheduling algorithms for conventional Web servers. VectorDot a novel load-balancing algorithm has been introduced in [18] to work with structured and multi-dimensional resources limitations by taking servers and storage of a Cloud into account. A countable measure of load imbalance on virtualized data center servers has been proposed in [19]. In [20] a comparative study of widely

used VM placement strategies and algorithms for Cloud data centers has been presented. An overloaded resource based VM placement approach has been presented in [21]. In our previous study [22] the comparison of various VM scheduling algorithm has been presented and demonstrated the necessity of new efficient placement VM placement algorithm.

A genetic based simulated annealing algorithm for optimization of task scheduling in cloud computing has been proposed and implemented in [23]. This algorithm only considers the QOS necessities of various types of tasks. Some of the genetic operators that use the group-oriented structure lead the better results when compared to the non-grouping genetic based algorithms which are not use such grouping feature. In [24] [25] they used the grouping based genetic algorithm to reach better results than conventional methods and universal heuristic algorithms.

3. Problem Formulation

The major principle of the IaaS cloud computing system is that its user can make use of the resources to have good performance and economic benefits. With the support of virtualization innovation the resources can be conveyed to the users in the form of virtual machines hence an efficient virtual machine allocation policy and management process is required to avoid underutilization or overutilization of the physical machines which may affect the quality of services of the IaaS cloud. The under utilization of servers is a well known expenditure concern in cloud management. Low utilization of server resources leads to the usage of more physical machines, increasing expenses for machine power and capital and operational expenses for cooling systems. Moreover, surplus machines require more carbon footprint. The overutilization of physical servers results in violating the SLA and quality of service constraints. Efficient allocation of Virtual machine instance request will meet client requirements, improve the resource utilization, increases the overall performance of the cloud computing environment and also decreases the number physical machines used. Therefore an efficient VM scheduling and ongoing load monitoring and optimization in IaaS is an important cloud computing problem to resolve.

4. Description of Design Model

To address the VM scheduling and ongoing load optimization problem we have proposed a multi dimensional physical host load aware scheduling and hybrid genetic based optimization algorithm and we implemented this heuristics in JAVA using Netbeans IDE.

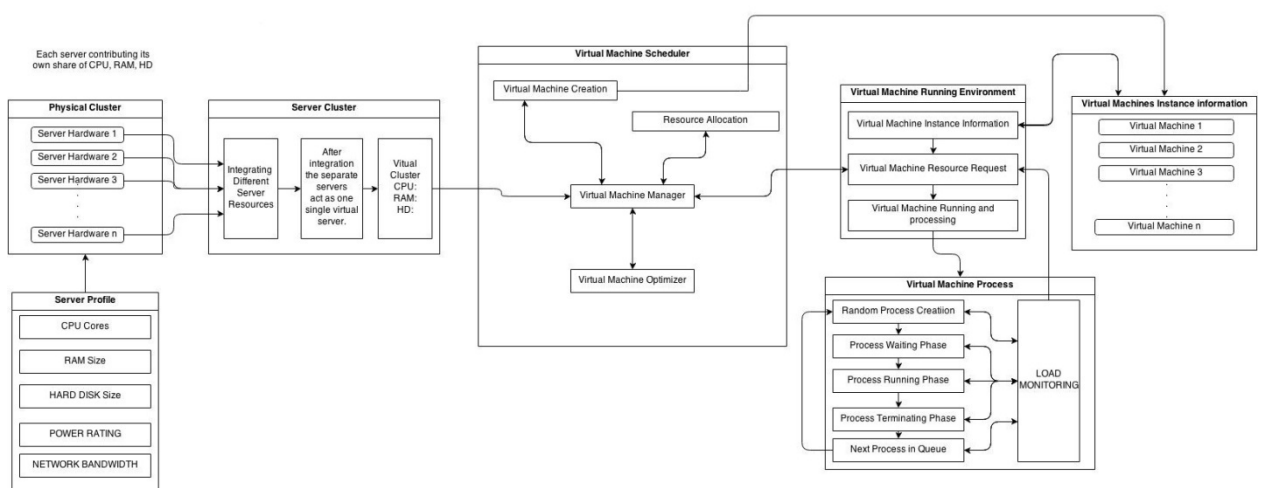


Figure 1. Framework model for VM placement in a cluster of physical machines

The above figure shows the framework model in which the proposed algorithm is implemented. Here the physical clusters can be formed by adding a set of physical servers each server contributing its own share of resources such as CPU cores, main memory, disk capacity and network bandwidth. The users can create virtual machine instances by giving their requirements for running the applications and the VM requests are submitted by the users to the computing system. As the submitted VMs enter to the cloud they are wait for their turn in the stack. The VM requests can be handled by the virtual machine scheduler and it finds the appropriate physical machine by estimating the VM size and checking for the availability and capacity of the physical machine when it finds the appropriate physical machine the VM scheduler immediately allocates the identified physical machine to the virtual machine instance request in queue and the required resource can be allocated to the virtual machine. Rebalancing of load in this environment is handled by virtual machine optimizer we used a modified version of genetic algorithm for load optimization.

5. Algorithm Design for the Process of Virtual Machine Allocation

This is a simple and efficient method that uses the load factor of the physical machine and also VM constraints given by the user about the VM resource requirement. It also identifies the overloaded physical machine and selects the VM to migrate based on the past behavior of the VM and picks the appropriate PM based on its resource utilization rate. Then it discovers the underutilized PMs and migrates the VMs running on it to some other suitable PMs, and turn it off in view of energy saving. Since accurately forecasting the resource requirement and behavior of the VM is not possible our algorithm utilizes the user deployed resource details of workload of the VM and considers the load factor of the physical machine as well as physical machine cluster to identify the appropriate PM for the given VM request. We use bin packing heuristic combined with three different algorithms to minimize the number of Physical machines required to place a set of VMs, quick and correct placement of VMs , maintain balanced load among the servers, increase the resource utilization rate and importantly doing all these things without violating any SLA agreements.

N number of virtual machines with resource requirements VR (CPU, Memory, N/W Bandwidth) to be placed on a set of M physical machines with resource capacities of PR(CPU, Memory, N/W Bandwidth) grouped in K number of physical machine cluster.

Consider PM as a set of all the physical machines in the entire system, where $PM = \{PM_1, PM_2, PM_3 \dots PM_m\}$. m is total number of the physical machines and an individual physical machine can be denoted as PM_i , where i denote the physical machine number and range of i is $(1 \leq i \leq m)$. Similarly, the set of VMs on the physical machine i , can be $\{VMi_1, VMi_2 \dots VMi_n\}$ here n is the number of VMs on the physical server i . If we want to deploy VM j on the PM_i then the load of the CPU, RAM and bandwidth has to be calculated individually. The CPU load of the PM_i at the time interval ts is denoted as follows

$$PM_i(cpu, ts) = \sum_{j=1}^n VM_{ij}(cpu, ts) \quad (1)$$

The amount of RAM utilized by all the VMs of PM_i at the time interval ts can be denoted as follows,

$$PM_i(ram, ts) = \sum_{j=1}^n VM_{ij}(ram, ts) \quad (2)$$

The amount of Network Bandwidth utilized by all the VMs of PM_i at the time interval ts can be denoted as follows

$$PM_i(nbw, ts) = \sum_{j=1}^n VM_{ij}(nbw, ts) \quad (3)$$

Where PM_i represents the i^{th} physical machine of the Physical Machine Cluster k , VM_{ij} represents j^{th} virtual machine of the PM_i and cpu , ram and nbw denotes the amount of CPU, RAM and Network Bandwidth utilized by all the VMs of the PM_i respectively. Hence derived from (1), (2) and (3) the weighted average load of the Physical Machine Cluster k at time interval ts can be denoted as follows

$$PMCK(WL, ts) = \sum_{i=1}^m PM_i(WL, ts) \quad (4)$$

Where $PMCK$ represents the k^{th} physical machine cluster of the datacenter, WL represents the weighted load of physical machine cluster at time interval ts and PM_i represents the i^{th} physical machine of the Physical Machine Cluster k

At any time interval the total VM load of a PM should not exceed the host capacity

$$\sum_{\text{resource}} PM_i W_{\text{resource usage}}(ts) \leq \text{TH value} \leq \sum_{\text{resource}} PM_i W_{\text{resource capacity}} \quad (5)$$

Where $\text{resource} \in \{\text{CPU, RAM, Network Bandwidth}\}$ and W_{resource} is the weight associated with each resource TH value is the threshold value set by the administrator if the load goes beyond this value the host can be considered as overloaded host and the selected VMs has to be migrated to other appropriate physical machines.

6. Dynamic VM Placement

In this process the objective is to place the VMs in PMs in a way that the total number of PMs required to place all the VMs is decreased. So we considered this a multi potential bin packing problem since this is a NP-hard problem, we provide a heuristic based on multiple policy. In the earlier stages of allocation most of the PMs are underutilized or not used so our heuristics works as like the first fit scheduler which is a simplest one to implement and which increases the response time of VM placement. As the number of VM grows in the datacenter the utilization level of PM is also being considered by our heuristic which really helps in maintaining the balanced load among servers. Towards the closing stages the heuristic works according to the nature of the VMs workload that is gathered from the user provided hints which helps in avoiding the bottleneck of a particular resource as well as avoiding the violence of any SLA agreements. The algorithm which is used to achieve these things is given below.

Algorithm 1: Dynamic VM placement

Step 1:- The VM requests given by the user at the time t_i is considered for allocation and scans the values of number of CPU cores, amount of RAM and amount of N/W bandwidth required.

Step 2: In this algorithm the scheduler maintains an index table for physical clusters and physical machines as well as their states whether available or busy.

Step 3: The scheduler scans the index table of the physical cluster for the load below 50 %, from top until the first available physical cluster is found or the index table is scanned fully.

Step 4: If the physical cluster is found then scan the index table of physical machines for the load below 50 % in all three major resources, from the top until the first physical machine is found.

Step 5: When found return the ID of the physical machine to the main controller

Step 6: Assign the VM to the identified PM.

Step 7: Update the index table of the PM and Physical cluster.

Step 9: Go to the step 1

Step 8: If not found then scheduler scans the index table of the physical cluster for the load below 70 %, from top until the first available physical cluster is found or the index table is scanned fully.

Step 9: If the physical cluster is found scan the index table of the PMs based on the requirements of the requested VM.

Step 10: If the requested VM is a CPU intensive then scan the PM index table for the amount of CPU utilized is below 70 %, from the top until the first physical machine is found.

Step 11: When found return the ID of the physical machine to the main controller

Step 12: Assign the VM to the identified PM.
Step 13: Update the index table of the PM and Physical cluster and go to the step 1
Step 14: If the requested VM is a memory intensive then scan the PM index table for the amount of RAM utilized is below 70%, from the top until the first physical machine is found.
Step 15: When found return the ID of the physical machine to the main controller
Step 16: Assign the VM to the identified PM.
Step 17: Update the index table of the PM and Physical cluster and go to the step 1
Step 18: If the requested VM is a network intensive then scan the PM index table for the amount of network bandwidth utilized is below 70%, from the top until the first physical machine is found.
Step 19: When found return the ID of the physical machine to the main controller
Step 20: Assign the VM to the identified PM.
Step 21: Update the index table of the PM and Physical cluster and go to the step 1
Step 22: If Physical Cluster is not found. The scheduler scans the index table for the load below 80 %, from top until the first available physical cluster is found or the index table is scanned fully
Step 23: If found scan the index table of the PMs based on the requirement of the requested VM.
Step 24: If the requested VM is a CPU intensive then scan the PM index table for the least number of CPU cores utilized from the top until the first physical machine is found.
Step 25: If found check the host has enough CPU cores to fulfill the VMs CPU requirement and will not surpass 90% of load after placing the new VM, then return the ID of the physical machine to the main controller.
Step 26: Assign the VM to the identified PM.
Step 27: Update the index table of the PM and Physical cluster and go to the step 1.
Step 28: Else go to step 22
Step 29: If the requested VM is a memory intensive then scan the PM index table for the least amount of RAM utilized from the top until the first physical machine is found.
Step 30: If host has enough RAM to fulfill the VMs memory requirement and will not surpass 90% of load after placing the new VM, then return the ID of the physical machine to the main controller.
Step 31: Assign the VM to the identified PM.
Step 32: Update the index table of the PM and Physical cluster and go to the step 1.
Step 33: Else go to step 22
Step 34: If the requested VM is a network intensive then scan the PM index table for the least amount of network bandwidth utilized from the top until the first physical machine is found.
Step 35: If host has enough bandwidth to fulfill the VMs bandwidth requirement and will not surpass 90% of load after placing the new VM, then return the ID of the physical machine to the main controller.
Step 36: Assign the VM to the identified PM.
Step 37: Update the index table of the PM and Physical cluster and go to the step 1.
Step 38: Else go to step 22

7. Load Balancing among Physical Servers

Since virtual machine workloads frequently change eventually, the well primary placement choices is not sufficient to maintain the balanced load. So it is essential to dynamically rework placements to make QOS constraints are to be satisfied while change in the data center load. Maintaining balanced load among server requires more number of VM migrations which leads to increase the operational cost of the service provider so VMs should be rearranged in a way such that the number of VM migrations should be minimized while satisfying resource utilization and load balance. In this type of multifaceted problems, even the most prominent algorithms can't realize all the associations between VMs, physical servers, and physical clusters to lead the most finely optimized solution. In order to achieve this goal a new grouping based genetic algorithm is proposed and we believe that our new algorithm is useful for this kind of complex optimization problem.

7.1 Grouping Genetic Based Algorithm Design for Load Balancing among Physical Servers

Genetic algorithm is a better searching technique for VMs mapping problem because of its enhanced optimization ability and parallelism advantages to solve complex problems.

The common steps of the Genetic algorithm are summarized as follows:

- Creation of an initial population
- The below steps repeated until it reaches the stopping condition
- Select chromosome pairs for mating
- perform cross-over to generate new offsprings
- Calculate the fitness value of new offsprings
- Create a new population

7.2 Creation of an Initial Population

Genetic algorithm is executed in parallel on a set of selected physical servers. So creating Initial populations plays an important role [26] in genetic algorithm so we develop a novel algorithm to generate initial population. In solution space for these physical hosts Selection process chooses the solution vectors according to the probability which is proportional to the fitness value. Then the algorithm crosses the chosen product vectors and performs mutation operation on the crossed product vectors based on the fitness value. The algorithm continues the same stage until it reaches out the terminating situation, followed by the crossover and mutation process.

Steps for selecting initial Population

Step 1: Check the PM load against threshold value.

Step 2: If any PM resource utilization surpasses the threshold value that can be considered as an overloaded host

Step 3: Select the overloaded servers and sort those PMs based on their resource utilization value.

7.3 Fitness Function

The fitness value plays an important role in any individuals output. It is the evaluation methodology of the dominance of an individual in the population. The performance of an individual can be determined by its fitness value. The performance of an individual can be considered as better when the fitness value is high. The existence or termination of an individual is completely based on the fitness value. Therefore, the fitness function is an essential part of the Genetic Algorithm. The objective function can be defined as follows when there is m host in the physical cluster k and m is the number of VM in each host.

$$PMi(Rcpu, ts) = PMi(Tcpu, ts) - \sum_{j=1}^m VMij(Dcpu, ts) \quad (6)$$

Where $PMi(Rcpu, ts)$ represents the remaining CPU of i^{th} PM at the time slot ts , $Tcpu$ represents the total CPU capacity of i^{th} PM and $VMij(Dcpu, ts)$ represents the demanded CPU of the j^{th} VM of the i^{th} Physical host at the time slot ts .

$$PMi(Rram, ts) = PMi(Tram, ts) - \sum_{j=1}^m VMij(Dram, ts) \quad (7)$$

Where $PMi(Rram, ts)$ represents the remaining RAM of i^{th} PM at the time slot ts , $Tram$ represents the total RAM capacity of i^{th} PM and $VMij(Dram, ts)$ represents the demanded RAM of the j^{th} VM of the i^{th} Physical host at the time slot ts .

$$PMi(Rnbw, ts) = PMi(Tnbw, ts) - \sum_{j=1}^m VMij(Dnbw, ts) \quad (8)$$

Where $PMi(Rnbw,ts)$ represents the remaining Network Bandwidth of i^{th} PM at the time slot ts , $Tnbw$ represents the total Network Bandwidth capacity of i^{th} PM and $VMij(Dnbw,ts)$ represents the demanded Network Bandwidth of the j^{th} VM of the i^{th} Physical host at the time slot ts .

$$PMCK \mu Rcpu = \sum_{x=1}^m \frac{PMi Rcpu}{m} \quad (9)$$

$$PMCK \mu Rram = \sum_{x=1}^m \frac{PMi Rram}{m} \quad (10)$$

$$PMCK \mu Rnbw = \sum_{x=1}^m \frac{PMi Rnbw}{m} \quad (11)$$

Where $PMCK \mu Rcpu$, $PMCK \mu Rram$ and $PMCK \mu Rnbw$ represents the k^{th} physical cluster's mean value of CPU, RAM and Network Bandwidth respectively.

In our proposed algorithm we consider four objectives in packing and optimizing the virtual machines in a data center: minimizing the total revenues, reducing the power consumption cost, reducing the cost of migration, increasing the total revenues and also reducing the SLA violation rate. These diverse objectives can be accomplished by evaluating the following fitness function described in equation 12 while allocating the VMs

$$\begin{aligned} & \text{minimize} \left(\sqrt{\frac{1}{N}} \sum_{i=1}^n (PMiR \text{ cpu} - PMCK \mu R \text{ cpu})^2 \right) + \left(\sqrt{\frac{1}{N}} \sum_{i=1}^n (PMiR \text{ ram} - PMCK \mu R \text{ ram})^2 \right) \\ & + \left(\sqrt{\frac{1}{N}} \sum_{i=1}^n (PMiR \text{ nbw} - PMCK \mu R \text{ nbw})^2 \right) \end{aligned} \quad (12)$$

The objective function of our algorithm wants to minimize the standard deviation of the remaining CPU, RAM and Network Bandwidth in each host. As we consider that the load of the entire physical cluster instead of taking into consideration of the total number of virtual machines in each physical host as a load balance metric we developed an objective function that tries to balance the consumption of CPU, RAM and Network Bandwidth on each host, in view of a heterogeneous environment, which consists of different hosts with different configurations.

7.3 Crossover Operator

Genetic algorithms crossover operator used to combine the qualities of different individuals in the population with the intention of creating a new generation. Hypothetically the new child will have good qualities from both parents and optimistically has better fitness. Any two parents have been chosen with probability relative to the fitness of the individual. Most of the times, the individuals with high fitness value will reproduce with higher probability than the individuals with lower fitness value. We followed a method which is similar to the one illustrated in [27] for the implementation process of the crossover operator. In our methodology all of the servers from both parents are integrated and the servers are sorted based on the fitness.

The servers with less remaining capacity of all the individual resources are at the front of the list, whereas the servers with more remaining capacity are placed at the end of the list. Then our algorithm analytically chooses the servers which has less remaining capacity and remains them together in the same group. During this process whenever a selected server contains any VM that belongs to a server that has been chosen previously, then that server is a superfluous and can be removed in order to avoid duplication. But this process will create a list of servers that may not include all VMs. These VMs which are outstanding that have not been integrated in any server will be used to reinserted in to other servers based on the algorithm 1.

7.4 Mutation Process

Mutation operator in our algorithm comprises three alternatives. First, choice of mutation process removes the VMs of randomly selected servers and the removed VMs consequently reinserted into the other servers which are in the new population based on our algorithm 1. Second, two randomly chosen VMs of existing packing order are interchanged between servers. In this process we assure that the algorithm never interchanges two VMs that came from the same server. As a third option, one VM is shifted to a different server to generate a new packing order.

Based on the information provided by the monitoring driver the second and third genetic operator works on the packing order list, to increase the performance of the ordering genetic process. Finally, for all the above genetic operators the mutation process is done on the VMs with probability inversely proportional to the fitness value of the server that the VMs originally come from. VMs placed in servers with lesser fitness value are mutated more frequently than VMs placed in servers with higher fitness value, in order to guarantee that the organization of enhanced server is retained. Presently new children will be an element of the next generation so we need to choose one solution from the next generation of solution. Whenever the exit criteria are satisfied then this algorithm is stopped and returns servers which has the highest fitness evaluation value.

Table I. Properties required for the index table of physical machine and physical machine cluster

S.No	Physical Machine	Physical Machine Cluster
1	Total number of VMs placed	Total number of PMs
2	Total number of VMs in each type (CPU intensive, RAM intensive, N/W intensive)	Total number of PMs exhausted
3	The percentage of load of the PM in each resource type individually	The cumulative percentage of the load of the entire PMs
4	Total number of CPU cores utilized and available	The list of PMs which can be used to place the CPU intensive VMs
5	Total amount of RAM utilized and available	The list of PMs which can be used to place the memory intensive VMs
6	Amount of n/w bandwidth utilized and available	The list of PMs which can be used to place the N/W Bandwidth intensive VMs

8. Performance Evaluation

8.1 Experimental Setup

The presented algorithm is implemented in JAVA Net beans IDE. Then we use CloudSim simulator for simulation to assess the execution and performance of our heuristics with some of the existing scheduling algorithm in terms of Response Time, Load Balancing among servers, Reasonable Resource Utilization, energy consumption, Minimum number of active PMs and Higher profit by reducing the number of migrations. The performances of the proposed algorithm were examined from both users and service provider's perception.

Since it is difficult to access the real datacenters or cloud infrastructures we used simulation based evaluation which can be easily reproducible to compare the performance of the proposed algorithm with the following existing works which is currently used by the majority of the cloud service providers: 1) First Fit Algorithm 2) Round Robin Scheduling Algorithm 3) Best Fit Algorithm. The simulated cloud environment contains a cluster of heterogeneous PMs the total resource capacity of PMs is expressed in percentage and randomly generated VM resource demand includes the number of CPU cores, amount of RAM and required network bandwidth.

8.2 Analysis

The investigations are done to analyze the effect our proposed algorithm in number of physical servers required to place a certain number of VMs, overall resource utilization rate of all the active servers, allocation time, load balancing, percentage of migration and percentage of SLA violations. The simulation results show that our proposed algorithm can use the less number of physical servers for placing a certain number of VMs which helps to improve the resource utilization rate. The response time of our algorithm is little bit more than the first fit

algorithm because of its nature of allocating VMs is based on the user constraints and past usage history of the VMs. Higher SLA satisfaction rate and lower load imbalance rate can be observed in results which also show that our multi dimensional host load aware and user constraints based algorithm is applicable, valuable and reliable for implementation in real virtualized environments.

Rebalancing of load in datacenter environment need live VM migrations but more number of frequently moved VMs between physical hosts causes increased datacenter cost hence the load rebalancing has to be achieved with minimum number of VM migrations in order to solve this issue we used a modified version of genetic algorithm for load optimization. Our results show that the percentage of VM migrations had been decreased through which we can achieve the better results for load balancing along with cost reduction.

In the following figures, Figure 2 shows the number of physical servers utilized by the scheduler to place the set of VM request without violating any SLA. Here our proposed host load aware user hint based algorithm and first fit algorithm uses comparatively same number of physical hosts for placing the set of VMs. The number of servers used by the proposed algorithm is minimized when compared to the round robin and best fit algorithm.

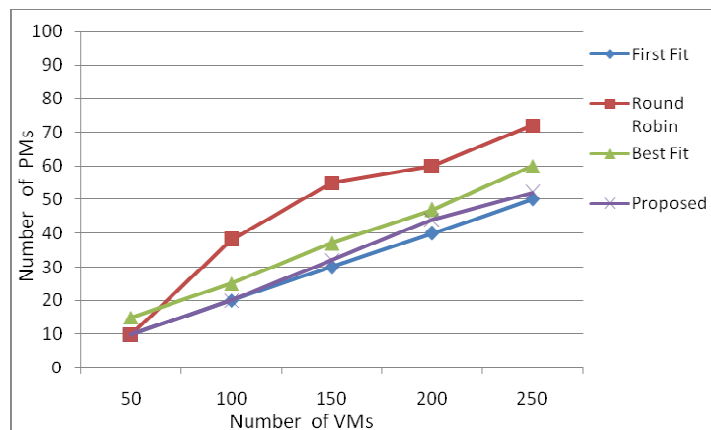


Figure 2. Comparison of the number of Physical Servers

Though the numbers of servers used by the first fit and proposed algorithms are comparatively stable from figure 3 we can see that the resource utilization rate of our algorithm is appreciably outperforms the other three algorithms.

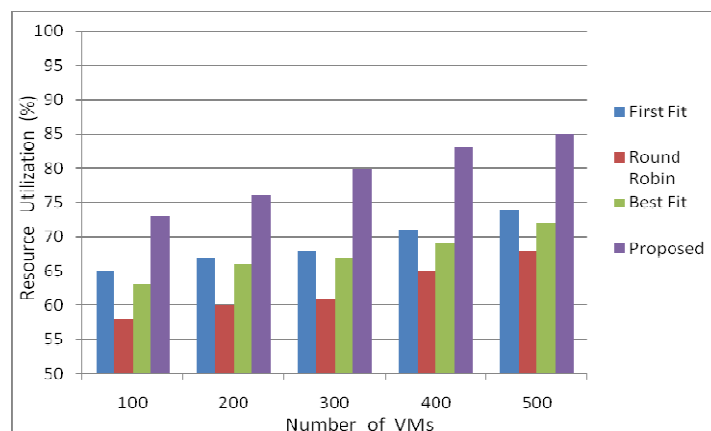


Figure 3. Comparison of the overall resource utilization rate

Figure 4 shows that the response time of all the algorithms are comparatively stable our algorithm takes little bit more time to allocate VMs than the first fit algorithm because of its nature of allocating VMs based on the user provided information and past usage history of the VMs

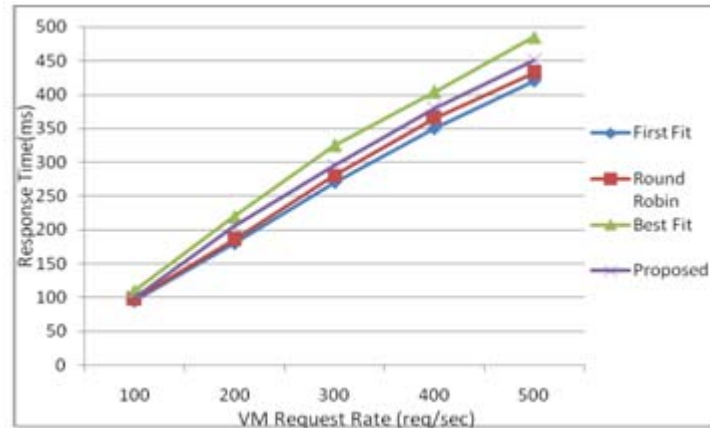


Figure 4. Comparision of the ResponseTime of different algorithms

The analysis extremely examines the effect of load balancing by using the algorithm and the number of migration needed to achieve the load balanced environment subsequent to scheduling.

Figure 5 shows the percentage of load imbalance value in which our algorithm demonstrates that it gets better the way to obtain the load balancing of the data center than the three other approaches when the number of VMs to deploy is increased.

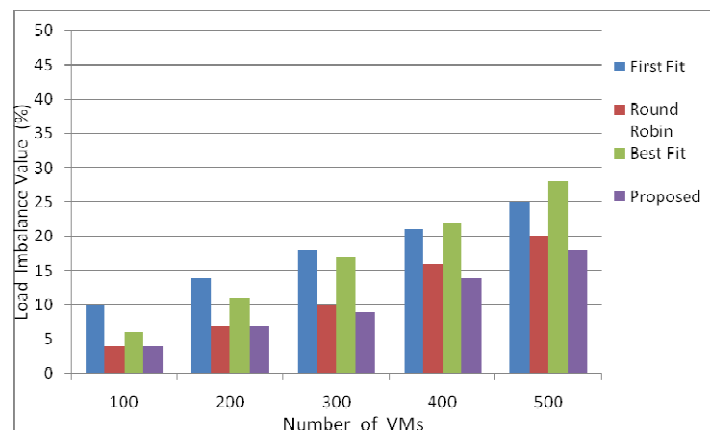


Figure 5. Comparision of the percentage of Load Imbalance Value

Our proposed algorithm is effective in improving the resource utilization rate and load balancing with the help of live migrations. But one of our major aims is increasing the total revenue which requires cutting down the VM migration cost which can be achieved by reducing the percentage of VM migration rate. We use migration rate as the estimation metric which is defined as the percentage of the migrated VMs to the total number of VM instances. We showed the results in the following Figure 6. The proposed algorithm decreases the migrating rate from about 18%-20% to less than 13 % which leads to reduce the VM migration cost. Though the curve of our proposed algorithm indicates that only less number of VMs migrated

from their original host to a new host we achieved the better resource utilization benefit and balanced load among the physical hosts.

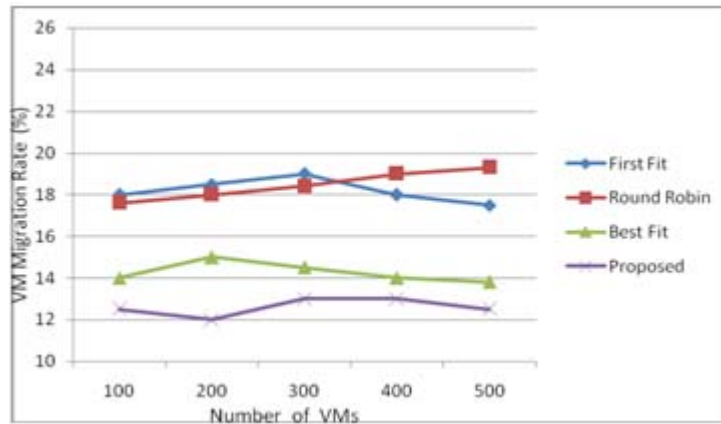


Figure 6. Comparison of the Percentage of VM Migration for Load Balancing

From the below Figure 7 the low SLA violation rate is observed in the proposed algorithm because it uses the past behavior of the VM along with the user provided information and it maps the PM by considering the availability of the each key resource like CPU, RAM and network bandwidth individually.

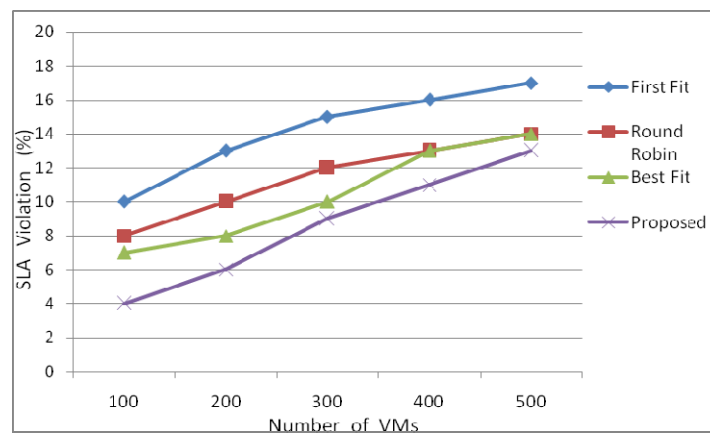


Figure 7. Comparison of the Percentage of VMs that violate their SLA

9. Conclusion and Future Work

We presented our novel algorithm that considers user constraints of VM along with physical host load factor to address the problem of mapping the VMs into PMs such that the number physical host used is minimized, the overutilization and underutilization of the resources of a host can be identified and resolved at the same time without violating any SLA agreements. Since we consider this as a multi potential bin packing problem we combined three different heuristics which considers load factor of hosts along with user provided information at the various stages of placing the VMs in physical hosts. Based on our analysis we showed that our proposed algorithm utilizes minimum number of physical servers for hosting the set of VMs, which also reduces the energy consumption of the datacenter and it achieved high resource utilization rate by the way of using minimal number of physical servers. Another considerable

enhancement in our algorithm is less percentage of load imbalance value and the percentage of VMs that violate their SLA.

As our future work we planned to incorporate the proposed algorithm with an open source cloud platform and test its efficiency against real time environment and also we would like to Modeling the interconnection prerequisites that can correctly express the relationships between VMs consolidated in the same host which will be valuable for additional optimizations of VM scheduling in cloud infrastructure.

References

- [1] K Chen and WM Zheng. "Cloud Computing: System instance and Current State". *Journal of Software*. 2009; 20(5): 1337-1348. doi:10.3724/SP.J.1001.2009.03
- [2] ZW Xu, HM Liao, et.al. "The Classification research of Network Computing System". *Journal of Computing Machine*. 2008; 18(9): 1509-1515.
- [3] GW Zhang, R He and Y Liu. "The Evolution based on Cloud Model". *Journal of Computing Machine*. 2008; 7: 1233-1239.
- [4] D Breitgand and A Epstein. Sla-aware placement of multivirtual machine elastic services in compute clouds. In '11 *IFIP/IEEE International Symposium on Integrated Network Management (IM)*. 2011: 161-168.
- [5] Xiaoqiao Meng, Canturk Isci, Jeffrey Kephart, Li Zhang, Eric Bouillet, and Dimitrios Pendarakis. *Efficient resource provisioning in compute clouds via vm multiplexing*. In Proceeding of the 7th international conference on Autonomic computing. New York, NY, USA. 2010: 11-20.
- [6] Hewlett Packard Web Site, Introducing Integrity Virtual Machines white paper, http://docs.hp.com/en/9987/Intro_VM_2.1.pdf
- [7] VMW are Web Site, Server Consolidation and Containment Solutions Brief, <http://www.vmware.com/pdf/server-consolidation.pdf>
- [8] Norman Bobroff, Andrzej Kochut, Kirk Beaty Dynamic Placement of Virtual Machines for Managing SLA Violations
- [9] Sindelar M, Sitaraman RK, Shenoy P. *Sharing-Aware Algorithms for Virtual Machine Colocation*. In: Proceedings of the 23rd ACM Symposium on Parallelism in Algorithms and Architectures. San Jose, California, USA. 2011.
- [10] Xu J, Fortes JAB. *Multi-Objective Virtual Machine Placement in Virtualized Data Center Environments*. In: Proceedings of the 2010 IEEE/ACM Int'l Conference on Green Computing and Communications & Int'l Conference on Cyber, Physical and Social Computing. Hangzhou, PR of China. 2010.
- [11] Singh A, Korupolu M, Mohapatra D. *Server-Storage Virtualization: Integration and Load Balancing in Data Centers*. In: Proc. of the 2008 ACM/IEEE conference on Supercomputing (SC'08). Austin, TX. 2008; 53: 1-53: 12.
- [12] Meng X, Pappas V, Zhang L. *Improving the Scalability of Data Center Networks with Traffic-aware Virtual Machine Placement*. In: Proceedings of IEEE INFOCOM. San Diego, CA, USA. 2010.
- [13] Kumar S, Talwar V, Kumar V, Ranganathan P, Schwan K. *Manage: Loosely Coupled Platform and Virtualization Management in Data Centers*. In: Proceedings of the 6th international conference on Autonomic computing. ACM, Barcelona, Spain. 2009: 127-136.
- [14] Wood T, Shenoy P, Venkataramani A, Yousif M. *Black-box and Gray-box Strategies for Virtual Machine Migration*. In: Proc of the 4th USENIX Symposium on Networked Systems Design and Implementation. Cambridge, MA. 2007.
- [15] Bobroff N, Kochut A, Beaty K. *Dynamic Placement of Virtual Machines for Managing SLA Violations*. In: Proc of the 10th IFIP/IEEE International Symposium on Integrated Network Management. Munich, Germany. 2007.
- [16] T Wood et.al. *Black-box and gray-box strategies for virtual machine migration*. Proceedings of Symp on Networked Systems Design and Implementation (NSDI). 2007.
- [17] H Zheng, L Zhou, J Wu. Design and implementation of load balancing in web server cluster system. *Journal of Nanjing University of Aeronautics & Astronautics*. 2006; 38(3).
- [18] A Singh, M Korupolu, D Mohapatra. *Server-storage virtualization: Integration and load balancing in data centers*. Proceedings of the 2008 ACM/IEEE Conference on Supercomputing. 2008.
- [19] E Arzuaga, DR Kaeli. *Quantifying load imbalance on virtualized enterprise servers*. Proceedings of WOSP/SIPEW'10, San Jose, California, USA. 2010.
- [20] W Tian, C Jing, J Hu. *Analysis of resource allocation and scheduling policies in cloud datacenter*. Proceedings of the IEEE 3rd International Conference on Networks Security Wireless Communications and Trusted Computing. 2011.
- [21] T Thiruvankadam and Dr V Karthikeyani. An approach to virtual machine placement problem in a datacenter environment based on overloaded resource. *International Journal of Computer Science and Mobile Computing*. 2014; 3(6): 837-842.
- [22] T Thiruvankadam and Dr V Karthikeyani. *A Comparative study of VM Placement Algorithms in Cloud*

- Computing Environment*. In proceedings of 07th SARC-IRF International Conference, India. 2014.
- [23] Guo G, Ting-lei H, Shuai G. "Genetic Simulated Annealing Algorithm for Task Scheduling based on Cloud Computing Environment". *IEEE International Conference on Intelligent Computing and Integrated Systems (ICISS)*. Guilin. 2010: 60-63.
- [24] Wilcox D, McNabb A, Seppi K. *Solving virtual machine packing with a reordering grouping genetic algorithm*. In: Proceedings of the IEEE Congress on Evolutionary Computation (CEC). 2011: 362–369.
- [25] Tarun goyal & Aakanksha agrawal. "Host scheduling algorithm using genetic algorithm in cloud computing environment". *International Journal of Research in Engineering & Technology (IJRET)*. 2013; 1(1): 7-12.
- [26] M Srinivas, and LM Patnaik. Fellow, IEEE. Adaptive Probabilities of Crossover and Mutation in Genetic Algorithms. *IEEE Transactions on Systems, Man and Cybernetics*. 1994; 24(4).
- [27] P Rohlfshagen and J Bullinaria. *A Genetic Algorithm with Exon Shuffling Crossover for Hard Bin Packing Problems*. Proceedings of Genetic and Evolutionary Computation Conference. 2007; 9: 1365-1371.